

# Meet our SEA LIFE creatures!

## Photo Album



Who's who? Can you match these sea creatures with their image?

Green Sea Turtle

Common Starfish

Nurse Shark

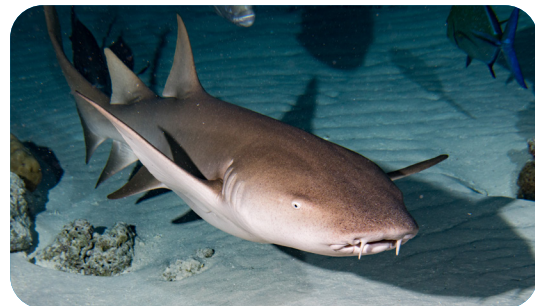
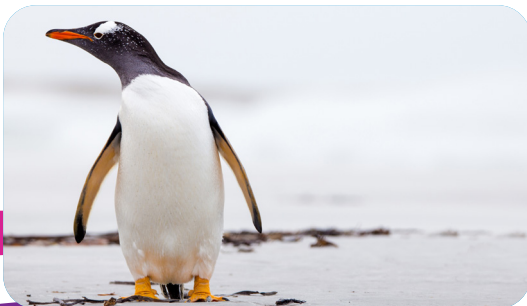
Clownfish

Cow Nosed Ray

Gentoo Penguin

Moon Jellyfish

Weedy Sea Dragon



# Meet our SEA LIFE creatures!

## Creature Feature Table

Now, in pairs, can you match the 'creature features' to the correct creature from the SEA LIFE Creatures Photo Album? Use the Creature Features Table to help you record your answers. Don't worry if you can't get them all; maybe just try to spot one or two!

Creature	Features
	Multiple arms, tough leathery skin, hundreds of sticky feet, no brain or blood!
	A wide, smooth shell; greenish-coloured skin; flippers for swimming.
	Bright orange bill; orange-pink webbed feet; long body.
	Flat body; long tail trailing behind; mouth and nostrils under the belly!
	Strong jaws; grey-brown skin; fin, long tail, long whiskers.
	Long tube-shaped snout and small fins that help to propel them through the water.
	A recognizable reef-dweller with a bright orange and white band body; about 4.3 inches in length.
	Translucent and umbrella-shaped body, short delicate tentacles, no brain, heart, bones or eyes!

